



# Sami DOLLS Patterns: Doll Skirt (with 3 hem options) Pattern & Sewing Instructions



## Pattern & Sewing Instructions

**Copyright:** Theresa Weisskircher, Owner of Sami DOLLS, 2016.

You may use this pattern to make items for sale. Mass production or sale of parts of this pattern or the entire pattern is prohibited.

If you quote Sami Dolls as the pattern source, it is greatly appreciated. [www.samidolls.com](http://www.samidolls.com)



## Doll Skirt (for American Girl and Wellie Wisher dolls)

Thank you for downloading this pattern. I hope you will enjoy making one or many fabric baskets with it.

**Before printing the pattern, make sure you selected "Print Actual Size" in your printer settings.**

### Materials needed:

- ✿ Fabric of your choice
  - For the American Girl skirt: a piece of 24" x 8" (72 x 21 cm)
  - For the Wellie Wisher Skirt: a piece of 18" x 6" (46 x 16 cm)
- ✿ Elastic (8 to 10 mm wide)
  - For the American Girl skirt: a piece of 10" (25.5 cm) long elastic
  - For the Wellie Wisher skirt: a piece of 6" (15.2 cm) long elastic
- ✿ Bias tape (optional) to the length of the width of the skirt

Video instructions for this project can be found here: <https://youtu.be/Xrj43YACvzQ>

For more video Instructions visit my channel on YouTube: **Sami Dolls**

<https://www.youtube.com/SamiDolls>

## Instructions

### 3 Hem options:



**Hem option 1:** Finish the raw edge of the skirt bottom with a serger/ overlocker stitch.



Fold over the skirt bottom and pin it in place.



Sew the folded over hem in place.



**Hem option 2:** Fold over the skirt bottom twice, as narrow as possible.

Pin the hem in place.



Sew the folded over hem in place.



Now the first two bottom skirt option should be done.





**Hem option 3:** You can also finish the bottom raw edge of the skirt with a piece of bias tape.



Open up the bias tape and sew it to the edge of the skirt, in the crease of the bias tape.



Fold the bias tape over to the left side of the fabric and pin it in place.



On the right side of the fabric, sew along the bottom of the skirt edge, very close to the bias tape, but not on it.



Now that we had a look at 3 different hem options (there are many more of them and you can pick a different one, of course, if you like), we'll fold over the top edge of the skirt twice (along the fold lines as indicated on the pattern pieces).



Pin the top edge of the skirt in place. This will be the casing for the elastic.



Sew along the folded over edge, as close to the bottom edge of the fold as possible, so that the casing will be as wide as possible.



Pull the elastic through the casing (with a bodkin or safety pin) and tack it in place at the edges, so it does not slip inside the casing.



Now that the top edge of the skirt is gathered, we can close the side edges of the skirt and the skirt is done.



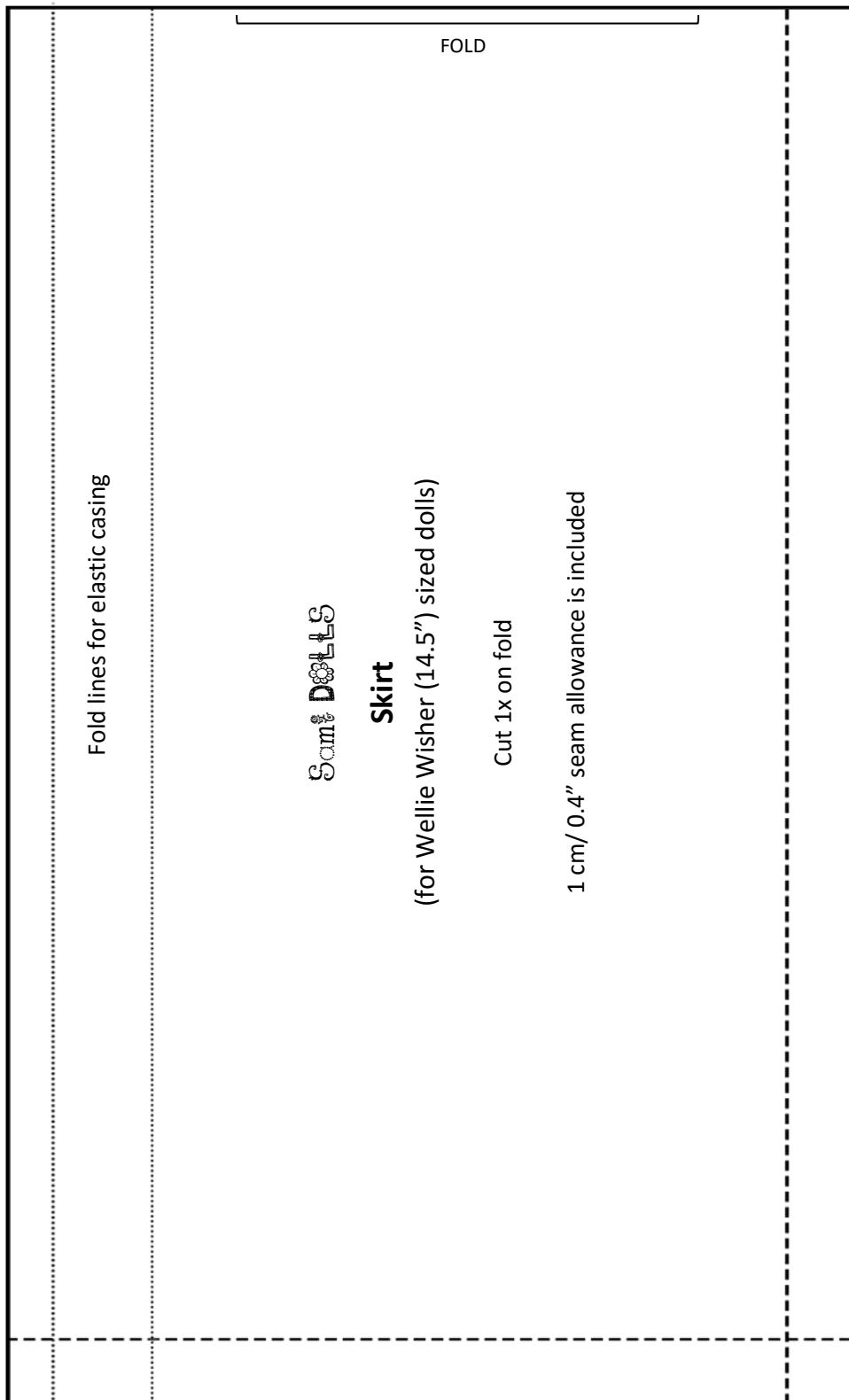
I hope you enjoyed this little project 😊

Any feedback or questions, please send me an email to [theresa@samidolls.com](mailto:theresa@samidolls.com)



Don't they look pretty in their new skirts ;) ?





**Sam & DOLLS**

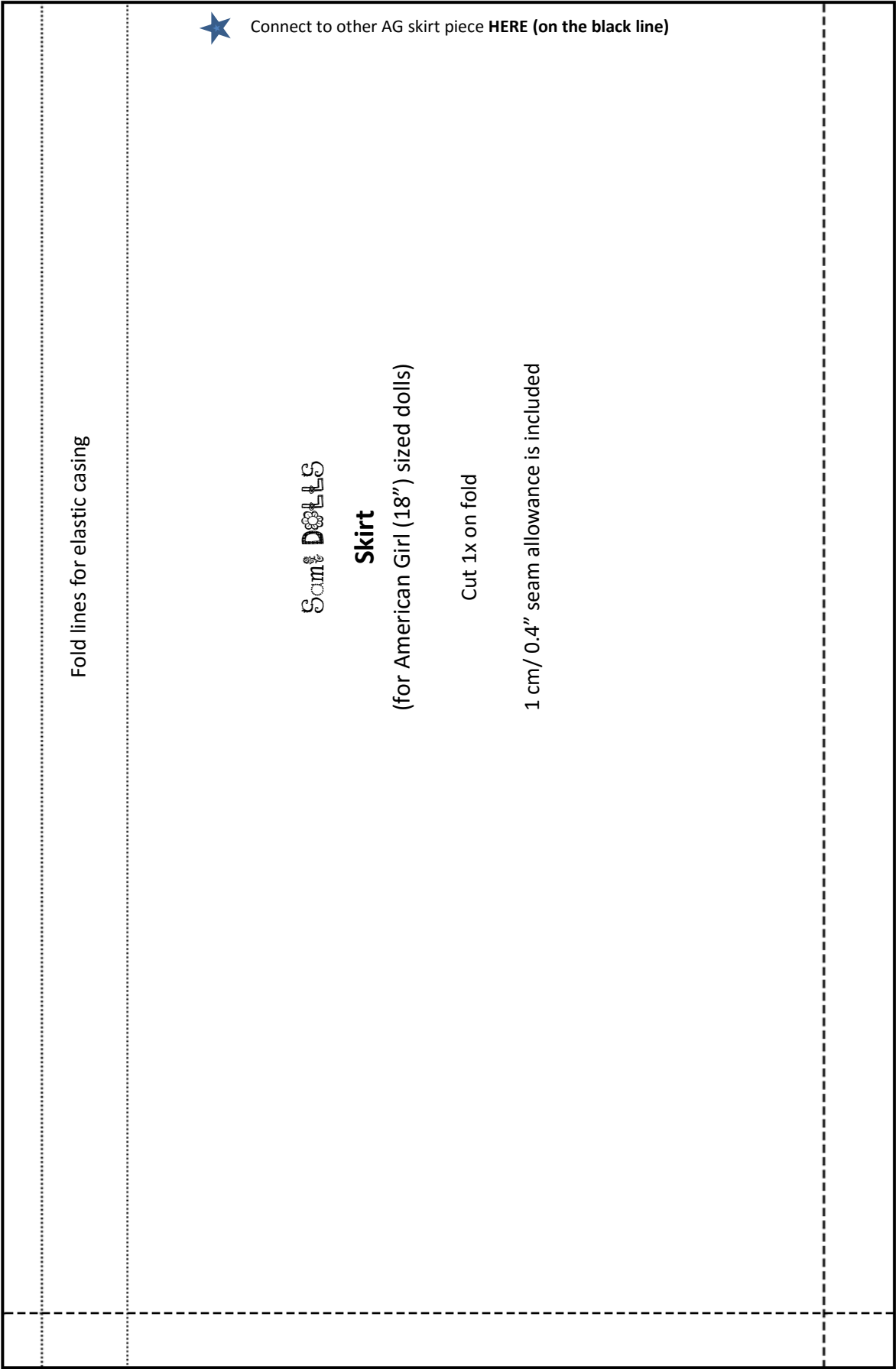
**Skirt**

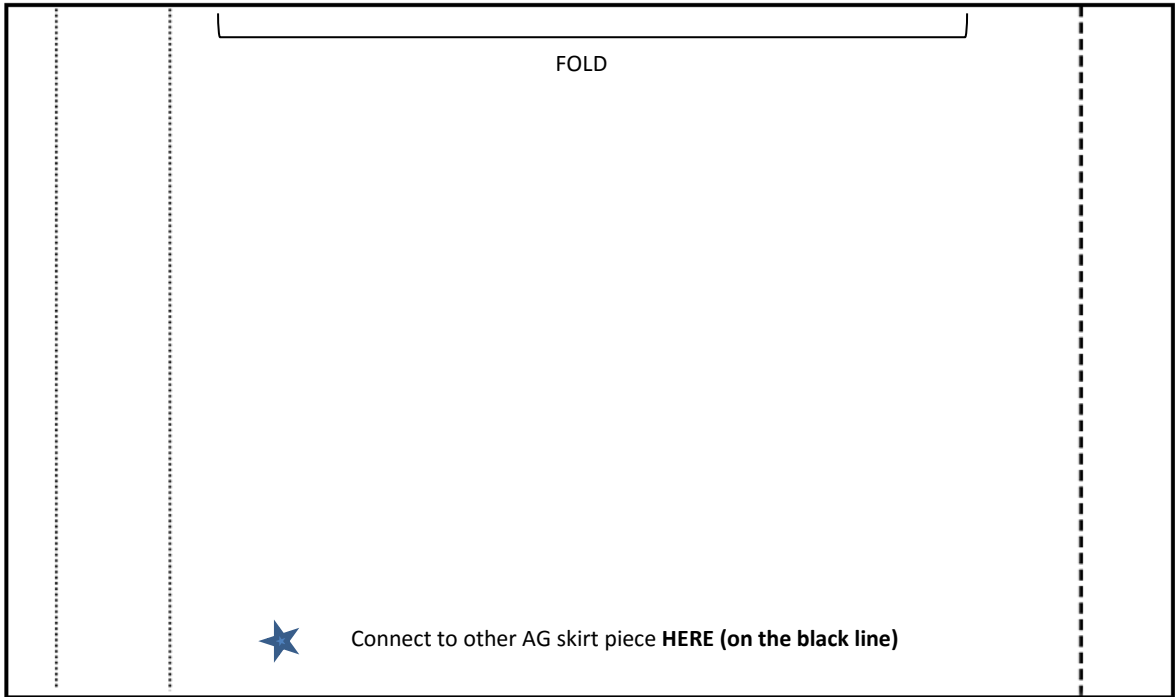
(for Wellie Wisher (14.5") sized dolls)

Cut 1x on fold

1 cm/ 0.4" seam allowance is included

**Control square**  
**3 x 3 cm/**  
**1.2" x1.2"**





**Control square**  
**3 x 3 cm/**  
**1.2" x1.2"**