



Sami DOLLS Patterns: Fabric Basket Pattern & Sewing Instructions



Pattern & Sewing Instructions

Copyright: Theresa Weisskircher, Owner of Sami DOLLS, 2016.

You may use this pattern to make items for sale. Mass production or sale of parts of this pattern or the entire pattern is prohibited.

If you quote Sami Dolls as the pattern source, it is greatly appreciated. www.samidolls.com



Fabric Basket (Sewing or Craft Basket)

Thank you for downloading this pattern. I hope you will enjoy making one or many fabric baskets with it.

Before printing the pattern, make sure you selected "Print Actual Size" in your printer settings.

Materials needed:

- ⊗ About 1 yard of cotton fabrics
- ⊗ About 1 yard of polyester batting
- ⊗ About 1 yard of heavy weight interfacing like [this](#) or [this](#).
- ⊗ Instead of batting and heavy weight interfacing you could also use thick fusible webbing/ interfacing
- ⊗ Ribbons, fabric flowers etc. for decoration
- ⊗ OPTION: You could sew a piece of pressed cardboard or bag bottom like [this](#) or this here to stabilize it. I did not have any on hand, unfortunately.

Video instructions for this project can be found here: https://youtu.be/E-7WvEinn_c

For more video Instructions visit my channel on YouTube: Sami Dolls

<https://www.youtube.com/SamiDolls>

Instructions



We'll need:

- ⊗ **Handles (1 from main, 1 from lining fabric, 2 from interfacing and 1 from batting)**
- ⊗ **Basket Sides (2 from main, 2 from lining fabric, 4 from interfacing and 2 from batting)**
- ⊗ **Basket Bottom (1 from main, 1 from lining fabric, 2 from interfacing and 1 from batting)**
- ⊗ **2 side pockets**

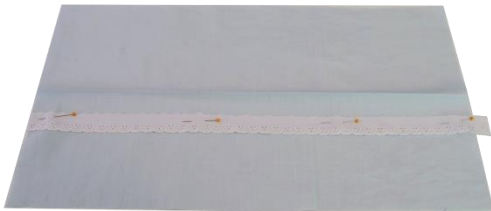


Iron the interfacing to the back side of the main and lining fabric pieces of the basket sides, handles and bottom.





Fold the pocket piece in half horizontally and press.



I unfolded the pocket pieces again and pinned some broderie anglaise trim to it.



And then I sewed some woven ribbon by www.farbenmix.de to it. You can add any adornments you like.

Next I placed the pockets on top of the outer basket sides, basted them to the basket sides along the outer edge and then I sewed a few lines to make some pockets. You can space them as close or as far apart as you'd like.



Then I basted the polyester batting to the basket sides of the lining fabric. If you have fusible webbing, just iron it to the lining fabric.

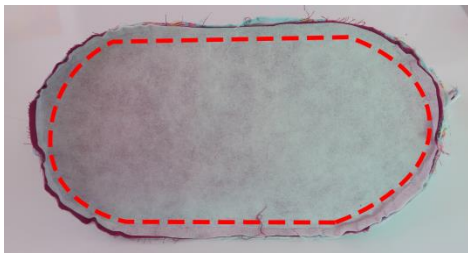




Put the basket sides of both main and lining fabric on top of each other, right sides facing, and close both side seams.



Pin the bottom pieces to the sides.



Sew the bottom pieces to the sides. Leave a 4"-5" opening at the bottom of the inner basket.



Pin the handle pieces right sides together. Also pin the batting to the lining fabric piece.



Sew along both sides.



Turn the handle inside out and press.





Top stitch along both side seams of the handle.



Pin the handle to the center of the long sides of the inner basket sides and baste them in place.



Turn the outer basket right sides out, pin it to the top edge of the inner basket and sew along the top edge.



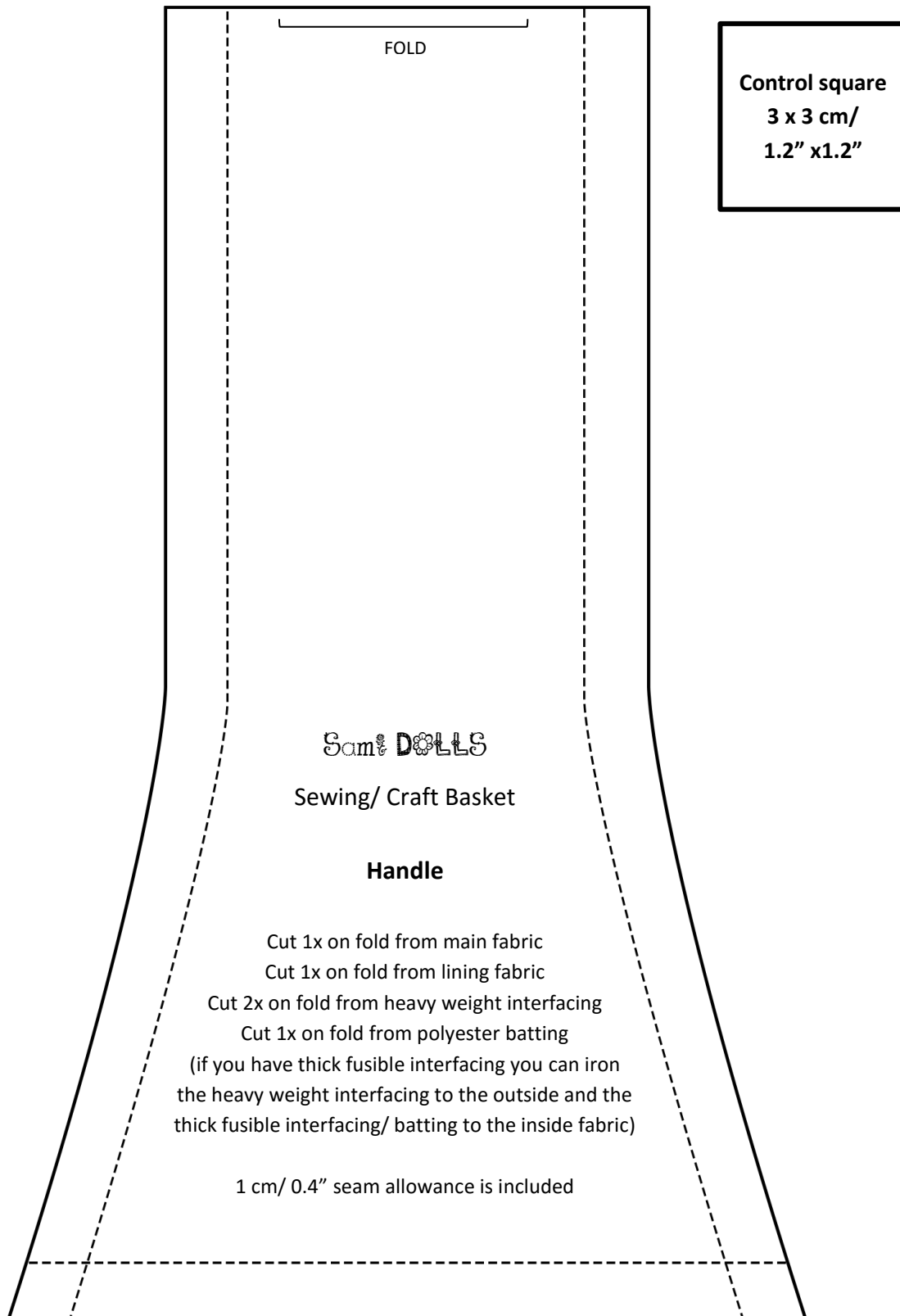
Turn the basket inside out through the opening you left at the bottom of the inside basket and close the opening by hand with a few ladder stitches.

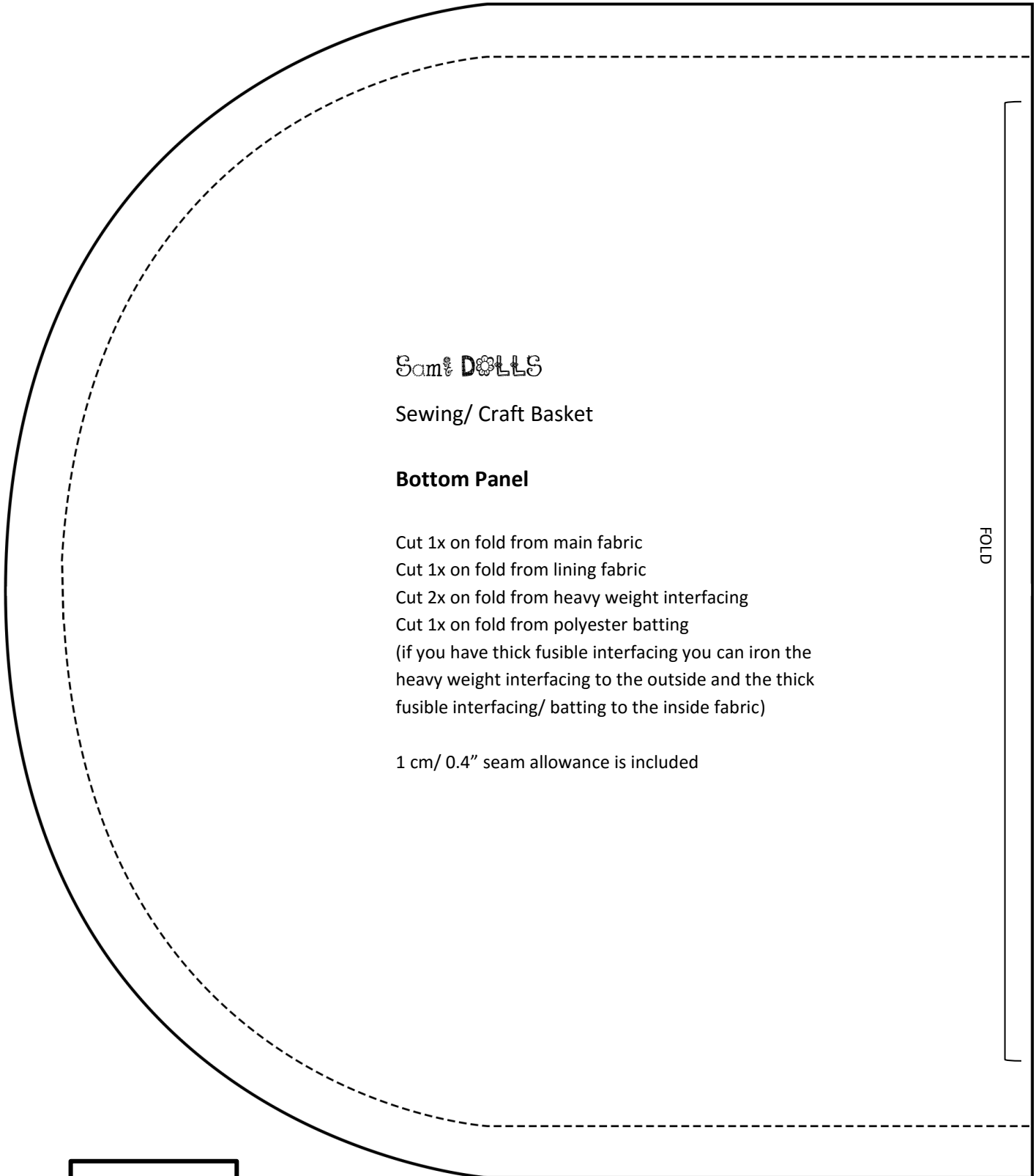


Top stitch along the top edge of the basket and you are done!

I hope you enjoyed this little project ☺

Any feedback or questions, please send me an email to theresa@samidolls.com





Sam DOLLS

Sewing/ Craft Basket

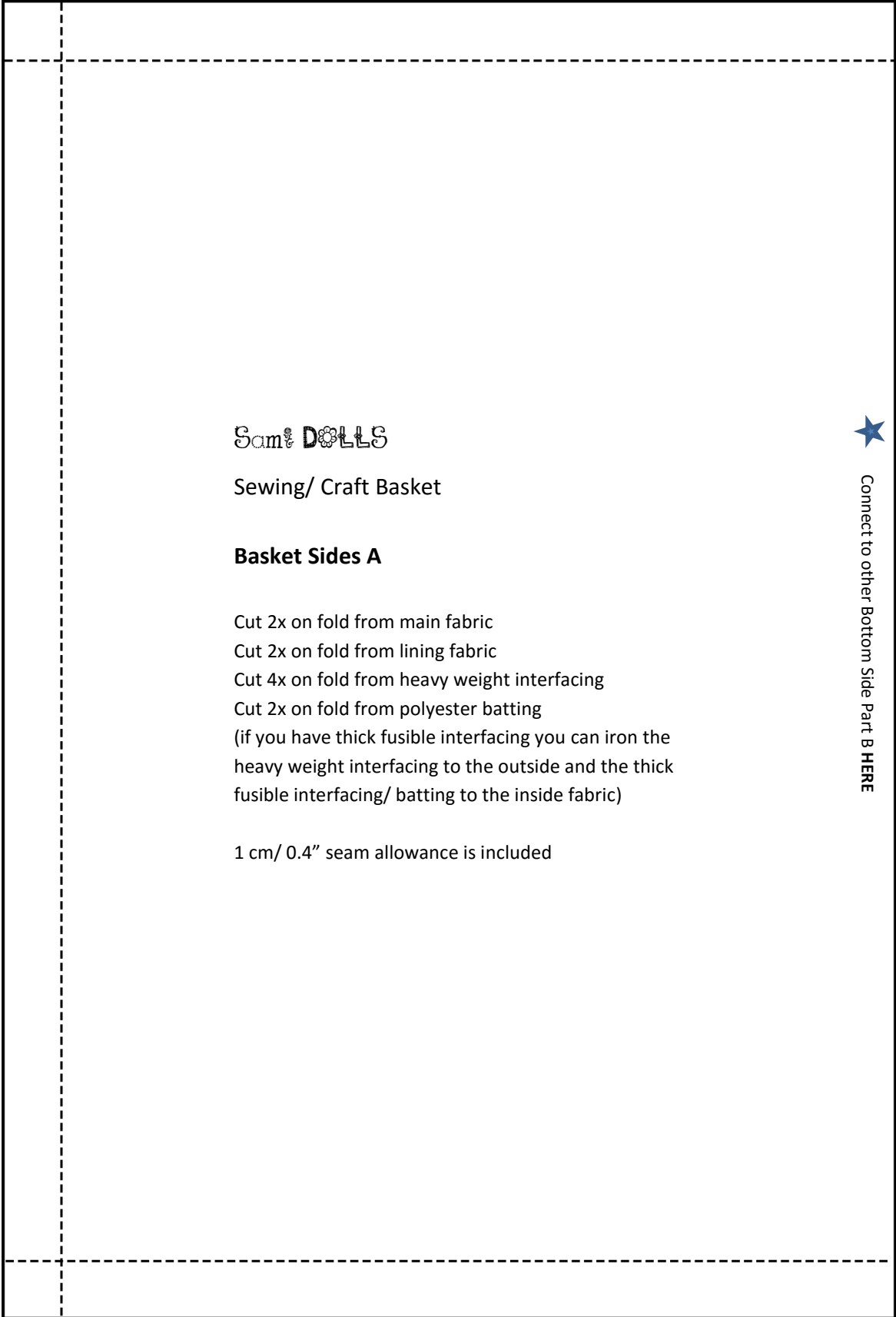
Bottom Panel

- Cut 1x on fold from main fabric
- Cut 1x on fold from lining fabric
- Cut 2x on fold from heavy weight interfacing
- Cut 1x on fold from polyester batting
- (if you have thick fusible interfacing you can iron the heavy weight interfacing to the outside and the thick fusible interfacing/ batting to the inside fabric)

1 cm/ 0.4" seam allowance is included

FOLD

Control square
 3 x 3 cm/
 1.2" x 1.2"



Sam & DOLLS

Sewing/ Craft Basket

Basket Sides A

- Cut 2x on fold from main fabric
- Cut 2x on fold from lining fabric
- Cut 4x on fold from heavy weight interfacing
- Cut 2x on fold from polyester batting
- (if you have thick fusible interfacing you can iron the heavy weight interfacing to the outside and the thick fusible interfacing/ batting to the inside fabric)

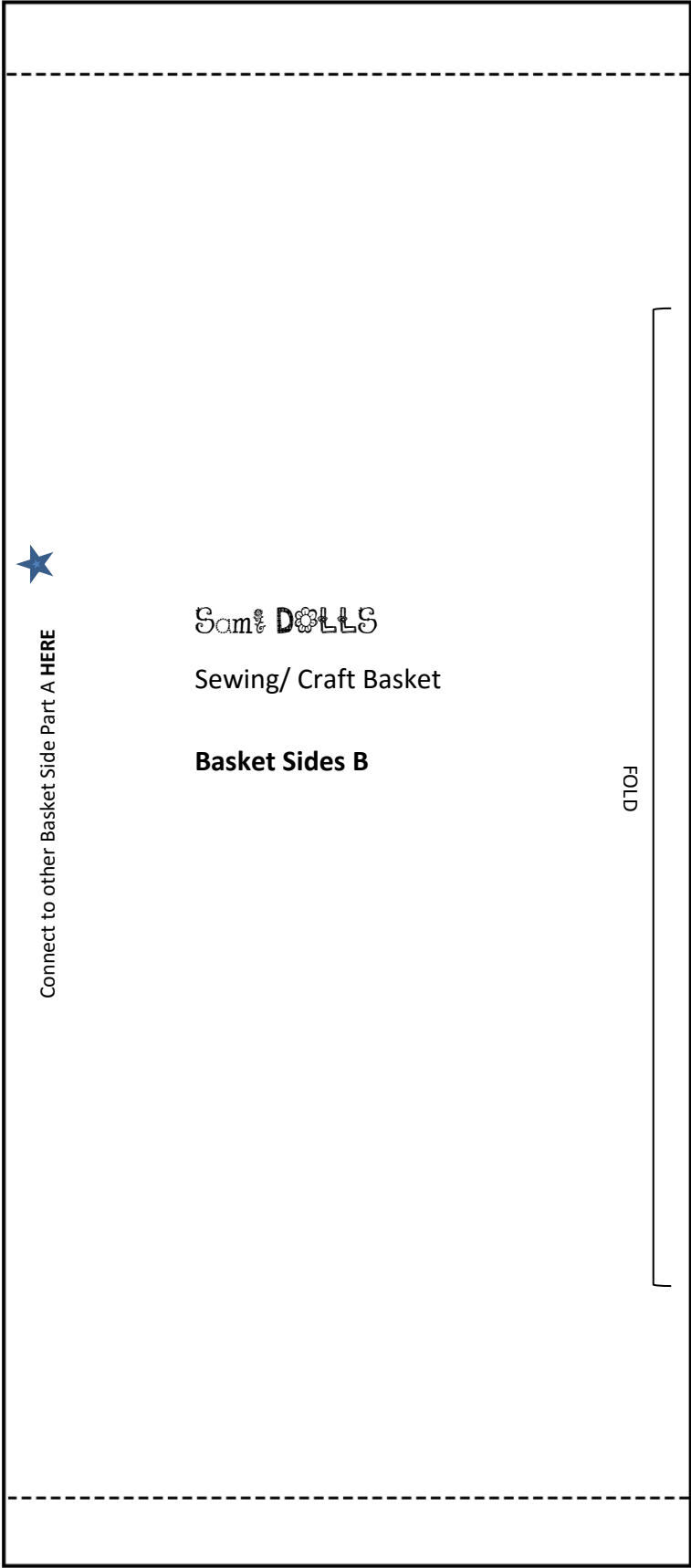
1 cm/ 0.4" seam allowance is included

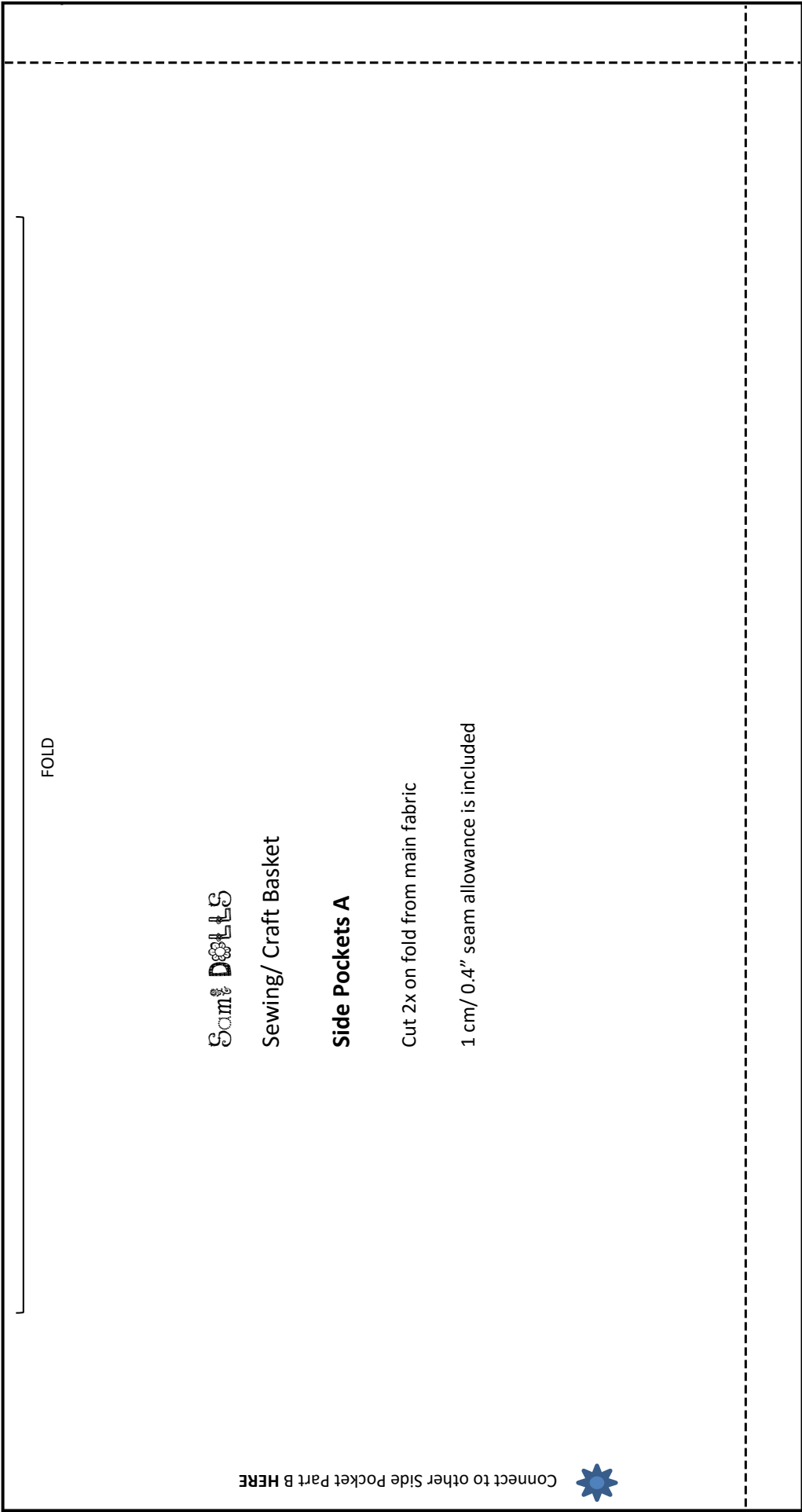


Connect to other Bottom Side Part B HERE

Control square
3 x 3 cm/
1.2" x1.2"

Control square
3 x 3 cm/
1.2" x 1.2"





FOLD

Sam DOLLS

Sewing/ Craft Basket

Side Pockets A

Cut 2x on fold from main fabric

1 cm/ 0.4" seam allowance is included

Connect to other Side Pocket Part B HERE



Control square
3 x 3 cm/
1.2" x1.2"

Connect to other Side Pocket Part A **HERE**



FOLD

Sam & Dolly

Sewing/ Craft Basket

Side Pockets B

Cut 2x on fold from main fabric

1 cm/ 0.4" seam allowance is included

Control square
3 x 3 cm/
1.2" x1.2"